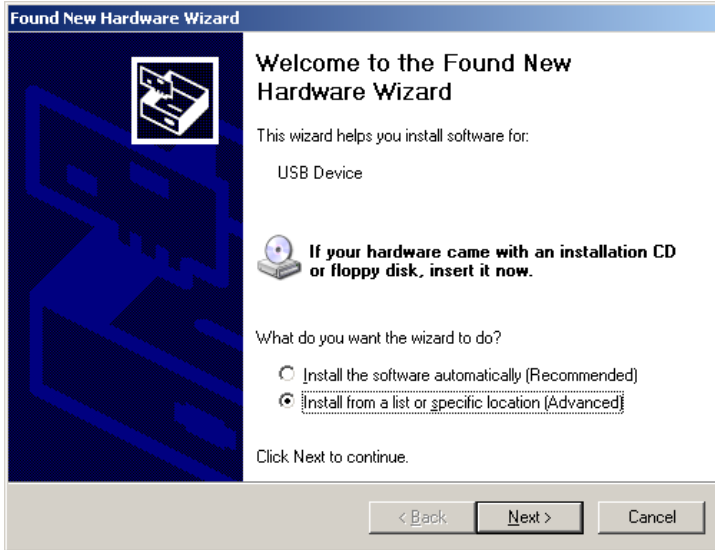


PSYCHLAB

USB Installation

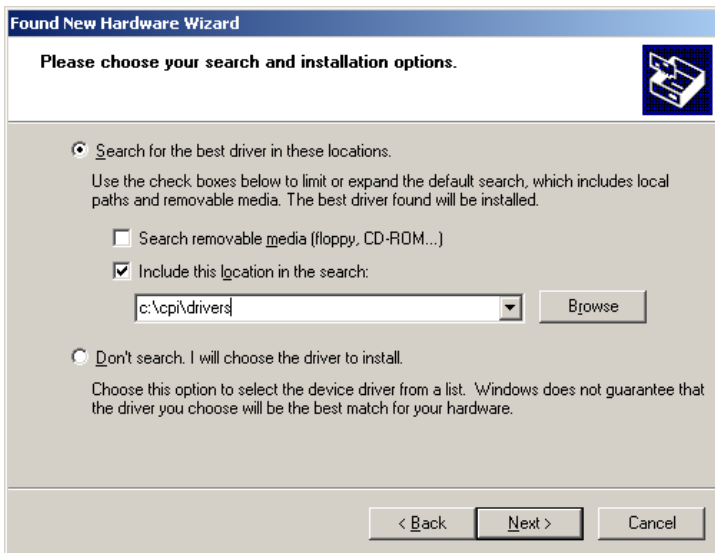


1) Before attaching any PsychLab or SAM unit to the computer, first run the installation program. As a result, a folder named C:\CPI will be created on the hard drive.

2) Download the installation to a temporary folder and unzip the files (or use the CD ROM).

3) Copy the files from the Unique folder of the installation to the C:\CPI folder

4) Copy files from the Drivers folder to C:\CPI\Drivers.



The PsychLab unit/s may now be attached one at a time to the USB port of the computer, using a hub if required. The New Hardware Wizard will appear. Follow each stage of the wizard process as illustrated, directing it to find PsychLab USB driver information in the folder C:\CPI\DRIVERS. Do not choose any automatic driver install options.

If the driver for each PsychLab unit is correctly installed, it will be called 'PsychLab'. The PsychLab unit will only work with this driver. If an incorrect driver is installed, it can be a lengthy process to remove it, particularly in Windows XP, which will tend to re-invent a driver even if it is thought to have been completely removed.

When the drivers have all been loaded, the PsychLabAcquire1 program may be run, and should find each PsychLab device.

5) Please print out manuals from the Documentation folder on the disk.

